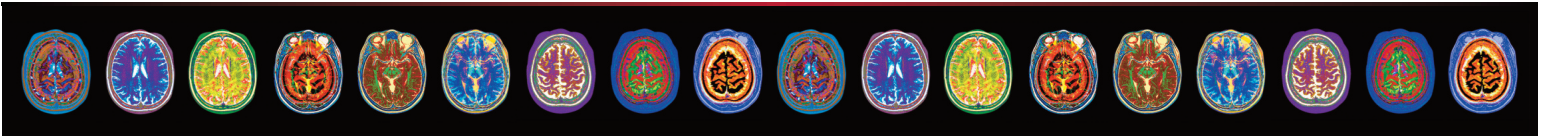


MULTIPLE SCLEROSIS CENTER AT ABINGTON MEMORIAL HOSPITAL'S NEUROSCIENCES INSTITUTE



WELCOME TO THE MULTIPLE SCLEROSIS CENTER

The Multiple Sclerosis Center at the Neurosciences Institute combines the expertise of neurologists, neurosurgeons, ophthalmologists, pain management specialists, psychiatrists and urologists with specialists in pharmacy and neuropsychology, physical and occupational therapy, vestibular therapy and speech pathology. Working with patients and their family members, these experts diagnose and manage MS to achieve our goal of improving overall quality of life.

MULTIPLE SCLEROSIS

Multiple Sclerosis (MS) is an autoimmune disorder that affects the brain and spinal cord. Characterized by recurrent episodes of neurological symptoms including blurry and double vision, numbness, weakness of the arms and legs, and difficulty walking, MS often progresses over years to irreversible neurological disability. MS is the most common disabling neurological disorder of young adults, with an estimated 400,000 patients in the U.S., and more than 3,000 patients in Bucks and Montgomery counties registered with the National Multiple Sclerosis Society.

COMPREHENSIVE CARE

The Multiple Sclerosis Center is staffed by three board certified neurologists and a registered nurse with expertise in MS. It is the only Center of its kind in Montgomery County. These specialists have experience and tools to diagnose, manage and provide comprehensive care for MS patients.

ADVANCED TREATMENT OPTIONS

In recent years, dramatic advancements have been made in understanding and developing treatments for MS. A more favorable outcome and better quality of life are definitely more attainable by people with MS through appropriate and aggressive management. Such management should consider all available options including: the medications mentioned above, symptomatic treatments, medical, rehabilitative and psychological approaches, alternative treatment options, and experimental treatments available through clinical trials in specialized MS centers.



Multidisciplinary care for both new and established patients includes access to the latest developments in diagnosis and treatment, including sophisticated radiology and neurophysiology testing, rehabilitation services, a variety of oral and injectable treatment options, as well as ultimately access to participation in clinical trials of new and investigational agents to treat the disease.

FOR MORE INFORMATION

The Multiple Sclerosis Center is conveniently located at Abington Health Center-Warminster, in Suite 204, Stein Medical Office Building, 205 Newtown Road. For more information, visit our website www.amh.org/brain or to make an appointment please call us at 215-441-6776.

MULTIPLE SCLEROSIS CENTER

Neurosciences Institute
Abington Memorial Hospital
Abington Health Center - Warminster
Stein Medical Office Building, Suite 204
205 Newtown Road, Warminster, PA 18974
215-441-6776
www.amh.org/brain